

## TESTING PROVES AIR REMOVAL WITH THE Water Mate Valve™

Testing was conducted on a closed system with the air being injected manually at Trillium Measurement and Control on the Patent Pending The Water Mate Valve™ to confirm the percentage of air that is removed once installed on a water line. Testing was conducted with a low, medium and high flow rate.



### Specifications

The Water Mate Valve works as a secondary back flow preventer to help protect the municipal water supply.

The Water Mate Valve is available in all standard plumbing sizes. The valve is made in double flanged and double threaded configurations according to your system pipe size. Sizes range from 3/4" up to 12". Larger sizes available upon request.

Applications include: hotels, apartments, restaurants, food/beverage, manufacturing, retirement homes, laundromats, car washes, green houses, residential and many more.

### Installation

The Water Mate Valve is designed to be installed on the USER side of the water meter. Installation should be performed by a licensed plumber. The Mate Valve works on over 99% of all water meters. co Valve Water Saver is a **Set it and Forget it** device. No maintenance, no operational costs, and comes with a 25-year warranty.

### Savings

Every property and water system has its own specifications and usage profile, and the savings available can vary depending on these and other factors. The vast majority of customers will see savings in the range between 8% and 30% with a small percentage being slightly higher or lower savings.

**Water Mate has installed the  
Water Mate Valve™  
throughout North America**  
CONTACT HEAD OFFICE AT

**TAKE CONTROL OF YOUR  
WATER METER  
STOP PAYING FOR AIR**

# Water Mate Valve™



**With Water Mate Every Drop  
Reduce Your Water Bill**

Water Mate Valve patent pending Variable Flow Control process eliminates water meter inaccuracy and excessive water consumption.

**Tested with Trillium  
Measurement and Control**



2360 Midland Ave Unit 6  
Scarborough, Ontario, M1S 4A9  
Tel: 647-277-1178  
Toll Free: 1-800-665-6549  
Email: [info@thewatermate.ca](mailto:info@thewatermate.ca)  
[thewatermate.ca](http://thewatermate.ca)

# WORKS ON OVER 99% OF ALL WATER METERS

## Caring for Water is Caring for Us All

The Water Mate Valve™ was created to resolve the inefficiencies inherent in water delivery and consumption. The Mate Valve™ maintains a constant back pressure by eliminating any excess air volume in your water. The Mate Valve™ eliminates peaks and valleys of water pressure which creates a smooth, even flow of water that results in more accurate meter reads, protects downstream equipment from malfunction, against damaging water surges and water hammer.

Our patent pending adjustable valve technology takes established principles of fluid dynamics and applies them in a new and financially rewarding application.

3" Flanged Water Mate Water Valve™



2" Threaded Water Mate Water Valve™

## DO NOT PAY FOR AIR! SAVE UP TO 30%

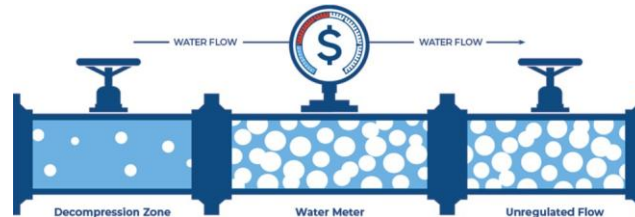
### How does the Water Mate Valve™ save me money?

In a number of ways:

- It stops you from being charged for any volume of air present in your water supply by compressing the air volume before it reaches your meter
- Prevents pressure drops from water usage through the water meter.
- It keeps your water meter operating within its designed flow range.
- It reduces over-supplied water usage from the city.
- The Mate Valve™ also acts as a secondary back flow preventor to protect the municipal water supply.

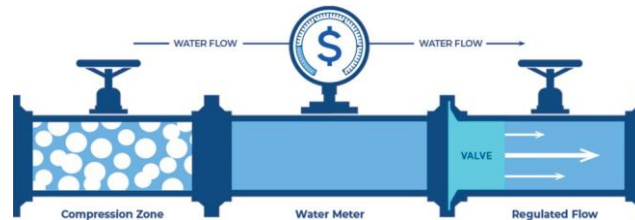
### Is there air in my water? **YES** and you pay for it.

In the volume of water passing through your water meter, there is also volume of air, and your water meter can't tell the difference! To measure water consumption, the most common water meters use a method known as Positive Displacement. This method is not limited to water: it measures the total volume of both water and air.



### How does the Water Mate Valve™ Work?

The Water Mate Water Valve™ does NOT remove the air. It simply compresses the air before it reaches your meter. Once compressed, the air flows through the meter undetected. The meter no longer measures the air! Now you're paying less for the same water usage!



Water Mate Valve™ is easily and fully EXTERNALLY ADJUSTABLE for maximum performance EVERY TIME!

This means no future disruptions to fine tune it for your building's unique eco-system.

### Advantages?

1. Water Mate Valve™ will not break electrical continuity on systems using water lines as a ground fault.
2. Water Mate Valve™ provides zero restrictions of the internal
3. Water Mate Valve™ allows for total range of pressure adjustment externally without the need of any special tool. We accommodate all pressure ranges without any internal changes. Fully adjustable from maximum city inlet pressure to totally closes zero PSI.
4. Standard ANSI 150# flange mounting. Standard NPT threaded mounting. Eco Valve™ components are assembled within a standard wye strainer body.
5. No other valve on the market except for the Eco Valve™ is capable of zero restriction of flow or less than a 5 PSI pressure drop.
6. Water Mate Valve™ provides a 25-year warranty of performance and workmanship from date of original purchase.
7. Water Mate valve™ and all individual components conforms to CSA NSF 61 & NSF 372 certifications and in process of adding Watermark certifications.
8. Water Mate Valve™ helps to protect the system and downstream equipment from pressure spikes and surges. We maintain more of a consistent downstream pressure smoothing out peaks and valleys of pressure differential

## SAVE WATER TODAY OR



## TOMORROW YOU'LL PAY.

# Model W M V

## Ductile Iron "Y" Type WATER MATE VALVE

### Application

The model W M V is designed for installation on water lines to eliminate air and turbulence from municipal water meters. It also protects downstream equipment from malfunction, pressure surges and water hammer.

### Standards Compliance

- MIL-S 16293F Type 2
- Meets the requirements of NSF/ANSI 372

### Materials

Main valve body Ductile Iron ASTM A536  
 Access cover Ductile Iron ASTM A536  
 Coatings Fusion Epoxy Finish  
 (Meets requirements of NSF/ANSI/CAN 61)  
 Valve Assembly Acetal Co-Polymer, 304 Stainless Steel

### Features

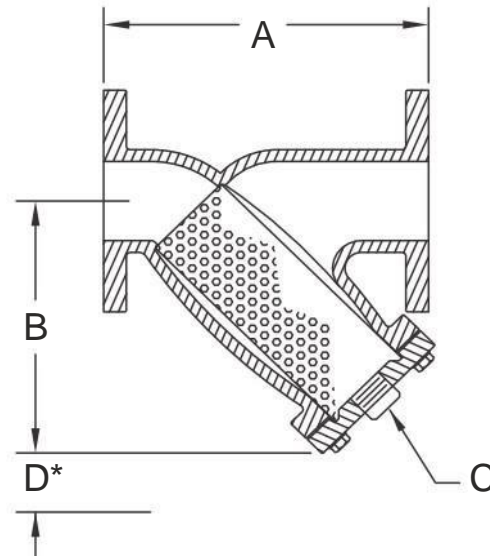
Sizes: 2 1/2", 3", 4", 6", 8", 10", 12"

**Pressure/temperature:** 200 psi @ 150°F WOG

**End connections:** ASME B16.42 Class 150

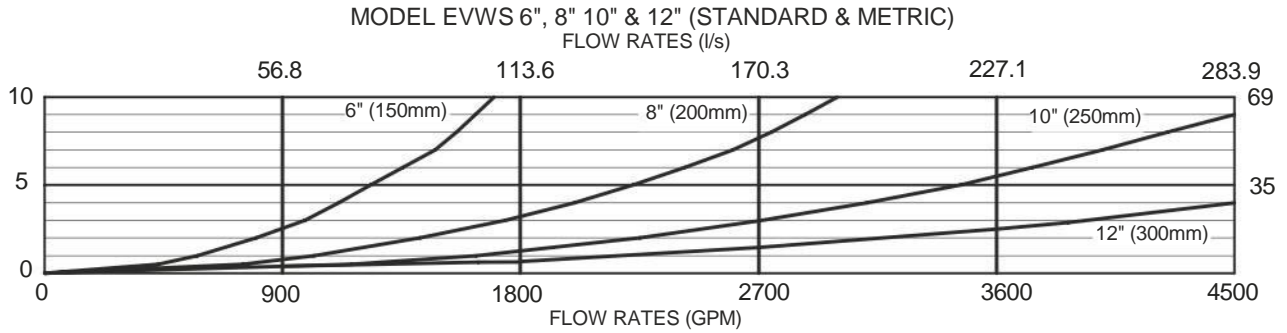
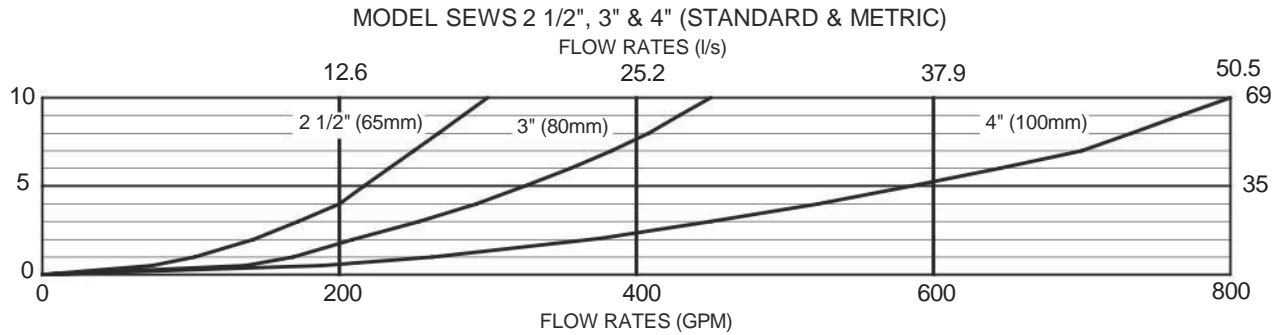


LEAD FREE



SIZE		DIMENSIONS (approximate)							WEIGHT	
		A		B		C	D*			
in	mm	in	mm	in	mm			in	mm	lbs.
2 1/2	65	10	254	8 1/4	210	1 1/4 NPT	6	152	35	16
3	80	10 1/2	267	9 1/4	235	1 1/4 NPT	6	152	45	20.5
4	100	15	381	12 1/2	318	2 NPT	9	229	61	27.5
6	150	18	457	14	356	2 NPT	10	254	165	75
8	200	24 1/4	616	17 3/4	451	2 NPT	11	279	239	108.5
10	250	29 1/2	749	21 1/4	540	2 NPT	14	356	394	178.5
12	300	33 3/4	857	24	610	2 NPT	17	432	500	227

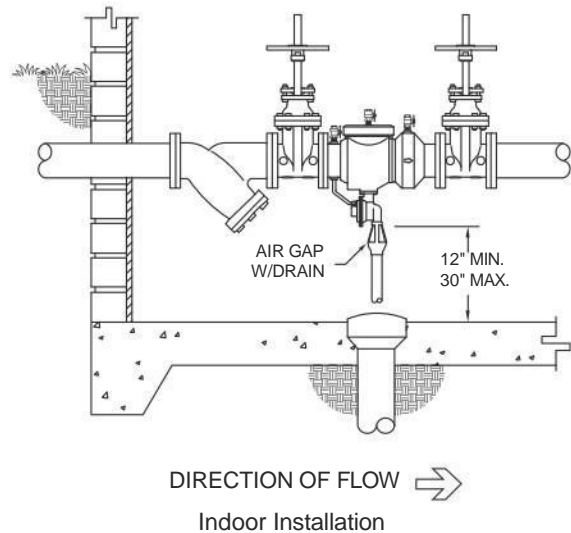
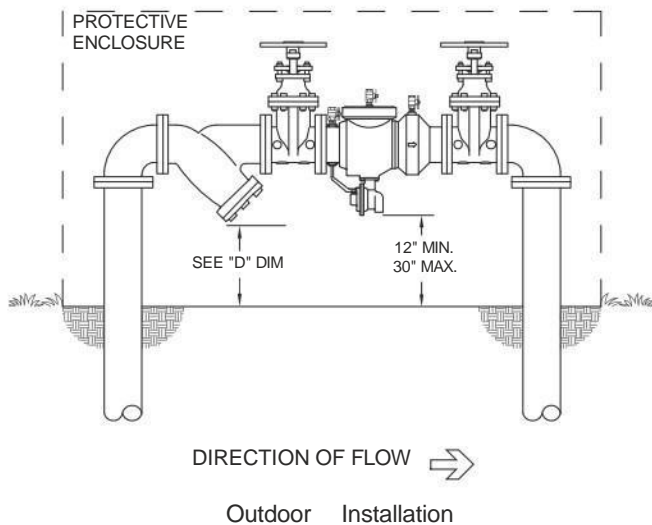
\*Vertical clearance for SEWSV cartridge removal



**Typical Installation**

Local codes shall govern installation requirements. Unless otherwise specified, the assembly shall be mounted with sufficient clearance for maintenance in accordance with the manufacturers' instructions and the latest edition of the Uniform Plumbing Code. The installation shall be made so that no part of the unit can be submerged. Horizontal installation is the preferred installation orientation, however the EVWS will properly operate in any orientation. The SEWSV shall always be placed AFTER the water meter.

Capacity thru Schedule 40 Pipe (GPM)				
Pipe Size	5 ft/sec	7.5 ft/sec	10 ft/sec	15 ft/sec
2 1/2"	75	112	149	224
3"	115	173	230	346
4"	198	298	397	595
6"	450	675	900	1351
8"	780	1169	1559	2339
10"	1229	1843	2458	3687
12"	1744	2617	3489	5233



**Specifications**

The Ductile Iron "Y" type SEWS shall meet the requirements of NSF/ANSI 372, and MIL-S-16293F Type 2. The main body and access cover shall be ductile iron ASTM A536 with an NSF/ANSI/CAN 61 certified Fusion Epoxy Finish coating inside and out. The integral valve assembly shall be accessible for cleaning without removing the device from the line. The Ductile Iron "Y" type meter efficiency valve shall be a Model SEWSV.

**Some of the advantages to using the Water Mate Water Valve:**

1. WMV will not break electrical continuity on systems using water lines as a ground fault.
2. WMV provides zero restrictions of the internal diameter.
3. WMV allows for total range of pressure adjustment externally without the need of any special tool. We accommodate all pressure ranges without spring changes. Fully adjustable from maximum city inlet pressure to totally closes zero PSI.
4. WMV provides waterline straining capabilities utilizing the standard supplied wye strainer basket.
5. Standard ANSI 150# flange mounting. Standard NPT threaded mounting. SEWS components are assembled within a standard wye strainer body.
6. No other valve on the market except for the SEWSV is capable of zero restriction of flow or less than a 5 PSI pressure drop.
7. WMV provides a 10-year warranty of performance and workmanship from date of original purchase.
8. Valve and all individual components conforms to NSF 61 & NSF 372 certifications and in process of adding CSA and Watermark certifications.
9. We also help protect the system and downstream equipment from pressure spikes and surges. We maintain more of a consistent downstream pressure smoothing out peaks and valleys of pressure differential.